

# Putting Shipwrecks on the Map



## Marine Heritage Section

### Project Objectives

*To update the location of Bermuda's shipwrecks to the latest and highest mapping standards.*



## Summary

Finding and locating shipwrecks is a Bermudian preoccupation rooted in the islands very discovery. The location of shipwrecks historically has always been one deliberately shrouded in mystery and subterfuge. Shipwrecks were until the mid 20th century viewed almost exclusively as items for salvage and made an important if not critical contribution to the local economy. For centuries mariners in and around Bermuda have used a myriad of navigational tools to locate and relocate shipwrecks. The advent of SCUBA coinciding with the growth of the recreational water sports arena led to many more individuals having unprecedented access to the waters of Bermuda. Many shipwrecks were discovered in this era. Traditionally the locations of shipwrecks were not shared with others. Shipwreck salvage and shipwreck exploration have now transitioned to shipwreck science.

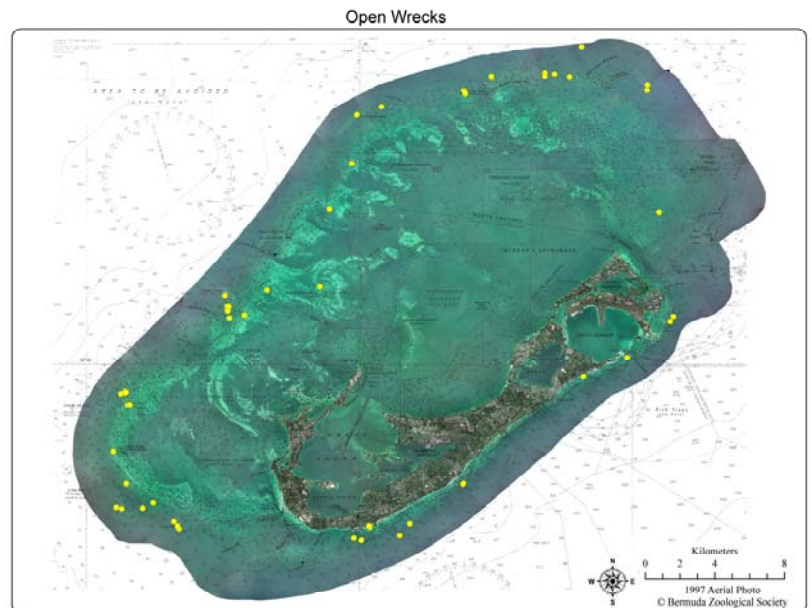
Coincident with this shift has been a shift in the navigational tools and techniques available for locating shipwrecks. This project aims to update or formalize the location of the known shipwrecks of Bermuda and create data standards for the definitive deposition of shipwreck sites in the Conservation Services GIS Mapping Database.

**The Historic Wrecks Act 2001 set pioneering new standards for the management and study of Bermuda's shipwrecks. The mapping of these is an integral part in the development of an effective management plan.**

*This research is funded by the Department of Conservation Services*

## Contacts:

Dr. Philippe Max Rouja  
Principle Scientist, Marine Heritage and Ocean Human Health.  
Mandy Shailer, GIS Manager  
Dept. of Conservation Services  
Tel: (441) 293-2727 ext. 2146  
www.conservation.bm



GOVERNMENT OF BERMUDA  
Ministry of Public Works  
Department of Conservation Services